



SETSCO SG  
APPROVED

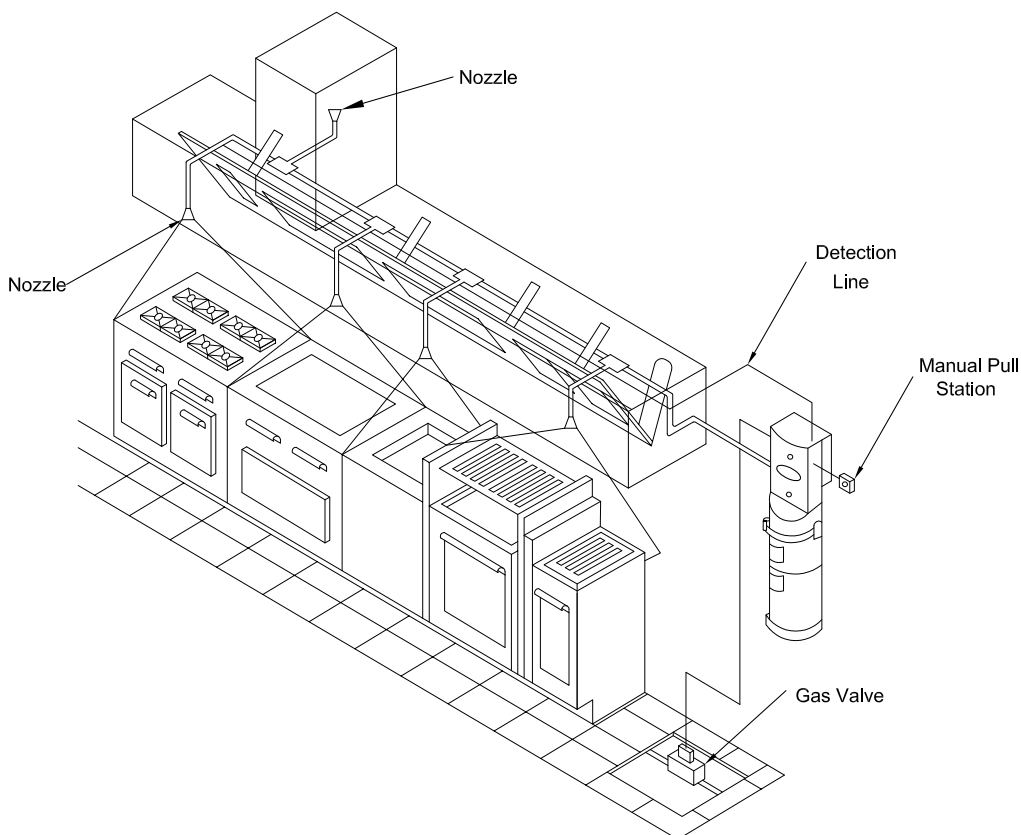


# LVT

## Kitchen Fire Suppression System

The automatic fire detection and suppression system caters for the needs of both small and large commercial enterprises, from kitchens to cellular transmission stations. The heat detectors are triggered only during fire. Sprinklers are strategically placed to offer maximum coverage of all installations. The simple and easy-to-maintain system is attractively styled and doesn't disrupt the working area.

These systems are ideally suitable for use in restaurants, hospitals, nursing homes, hotels, schools, airports, and other similar facilities.



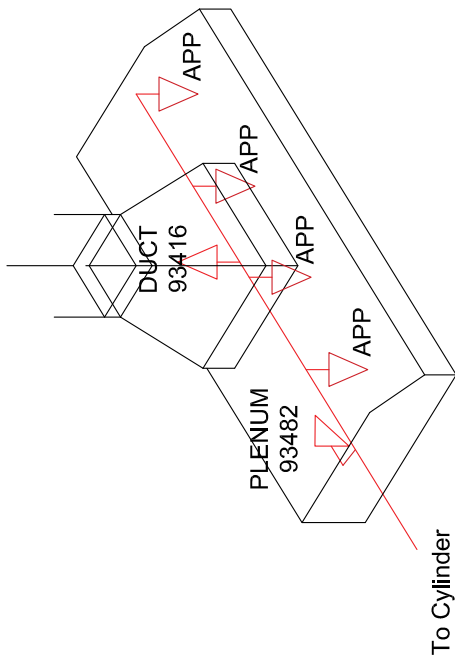
Due to constant improvements, product dimensions may differ slightly.



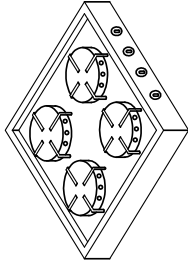
**FIRE ARMOUR**

14 Fan Yoong Rd, Singapore 629791 T 62666788 F 62663788  
Email: [firearmour@firearmour.com.sg](mailto:firearmour@firearmour.com.sg)

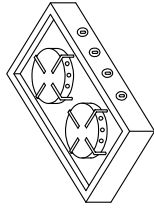
# SINGLE HOOD UP TO 3M IN LENGTH (HEAVY COOKING)



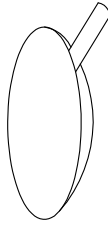
Combination of any 4 appliances allowed.



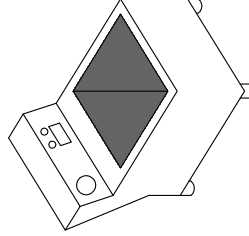
RANGE - 4 BURNER  
(1.5FP - 70 x 80cm)  
93483



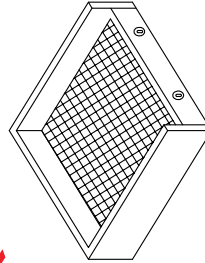
RANGE - 2 BURNER  
(1FP - 35 x 80cm)  
93482



1 WOK  
(1FP - Dia 60cm)  
93482



1 DEEP FRYER  
(2FP - 46 x 71cm)  
93429

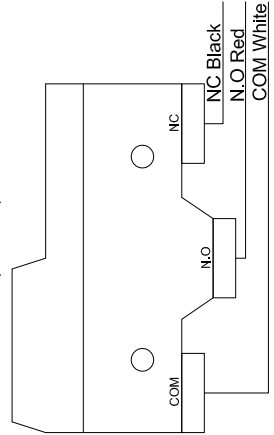


GRIDDLE  
(1FP - 76 x 91cm)  
93482

SAMPLE DRAWING

LVT WET CHEMICAL FIRE SUPPRESSION SYSTEM					
NO	TYPE OF PROTECTION	TYPE OF NOZZLE	FLOW	QUANTITY	TOTAL FLOW POINT
1	DUCT	93416	1	1	1
2	PLENUM	93482	1	1	1
3	APPLIANCE	N/A	1	1	1 or 2
4	APPLIANCE	N/A	1	1	1 or 2
5	APPLIANCE	N/A	1	1	1 or 2
6	APPLIANCE	N/A	1	1	1 or 2
TOTAL NUMBER OF FLOW POINTS					10
MAXIMUM FLOW POINT FOR WCK '16					12

MICRO SWITCH (IN MRM)



COMPANY	FIRE ARMOUR PTE LTD
DESIGNED BY	TWW
APPROVED BY	N/A
DATE	10/19/2015



# LVT System Parts

## LVT System Cylinder

MODEL	HEIGHT	Ø	WEIGHT	FLOW	PART NO
WCK6	665mm	175mm	14.0 KG	5 FP	LV-36981799-06
WCK9	797mm	175mm	18.7 KG	7 FP	LV-36981799-09
WCK16	682mm	175mm	30.4 KG	12 FP	LV-36981799-16
WCK20	835mm	324mm	39.2 KG	16 FP	LV-36981799-20
WCK26	835mm	324mm	46.5 KG	20 FP	LV-36981799-26

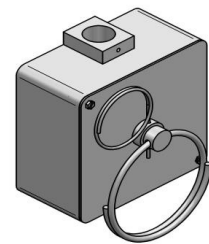


### Information

UL300 & SETSCO SG Approved

## LVT Manual Pull Station

MODEL	PART NO
LVT MANUAL PULL STATION	LV-93414320



### Information

All LVT systems come with a manual pull station by default

## LVT Fusible Link

MODEL	PART NO
LVT 360F FUSIBLE LINK	LV-93412328
LVT 450F FUSIBLE LINK	LV-93412329



### Information

360F & 450F Fusible Links

## LVT Nozzle Rubber Cap

MODEL	PART NO
LVT NOZZLE RUBBER CAP	LV-93412334



### Information

All nozzles come with a permanent rubber cap. This makes maintenance cheaper as there is no seal to replace.